

**NO ONE HAS EVER  
BEEN INFECTED WITH  
HIV OR HEPATITIS C  
FROM BEING POKED  
BY AN ABANDONED  
NEEDLE.**

(BC CENTER FOR EXCELLENCE IN HIV/AIDS)

**IF YOU GET  
POKED...**



- 1. DON'T PANIC!**
- 2. WASH** the wound gently with soap and water, but don't squeeze or suck it. Cover with a band-aid.
- 3. GO** to your nearest hospital emergency room as soon as possible to ensure proper care.

You can dispose of recovered needles in the trash or bring them to AIDS Vancouver Island (AVI) or to a Vancouver Island Health Authority health unit.

AVI offers free safer needle handling workshops for schools, daycares, workplaces, and other community groups.

For more information:

1-800-665-2437

[info@avi.org](mailto:info@avi.org)

### AVI LOCATIONS

**Victoria**  
1601 Blanshard St.  
Victoria, BC, V8W 2J5  
Ph: (250) 384-2366

**Duncan**  
Ph: (250) 701-3667

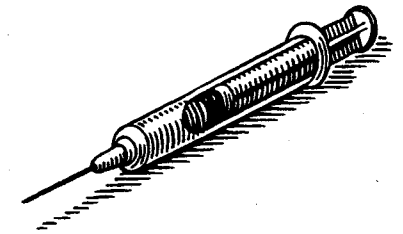
**Nanaimo**  
201-55 Victoria Rd.  
Nanaimo, BC, V9R 5N9  
Ph: (250) 753-2437

**Campbell River**  
1249 Ironwood Rd.  
Campbell River, BC,  
V9R 5N9  
Ph: (250) 830-0787  
1-877-650-8787

**Courtenay**  
355 6th St.  
Courtenay, BC, V9N 1M2  
Ph: (250) 753-2437

**Port Hardy**  
Ph: (250) 949-0432

## SAFE RECOVERY



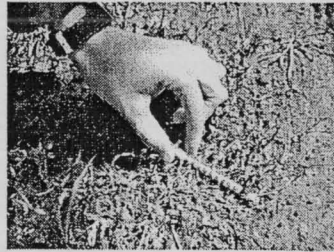
## HANDLING ABANDONED NEEDLES SAFELY

 AIDS Vancouver Island

## HOW TO PICK UP A NEEDLE SAFELY...

### 1. PICK UP

the needle with the sharp end pointing away from you. Bare hands work fine; if you wear gloves, make sure they fit snugly.

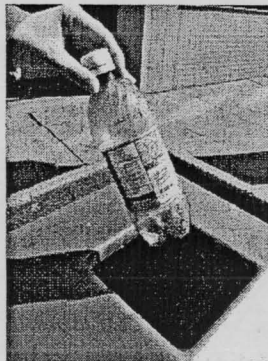


### 2. PLACE

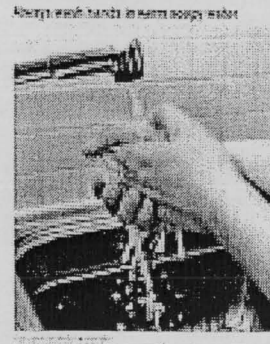
a hard plastic container on the ground and carefully insert the needle point down into the container and close the lid.



3. DISCARD the container in the trash or bring it to AVI or a health unit.



4. WASH your hands thoroughly.



## HELPFUL HINTS

- Make sure you can clearly see any needles you pick up.
- Hands work better than tongs or other instruments, which can be clumsy.
- Pick up the needle with ONE hand, with a secure grip on the middle or plunger end of the barrel.
- Take your time!
- NEVER re-cap a needle—you may accidentally poke yourself!
- NEVER use your hands to search through leaves or garbage. Use your feet (in thick shoes) or a long stick to spread rubbish out, making it easier to see needles.